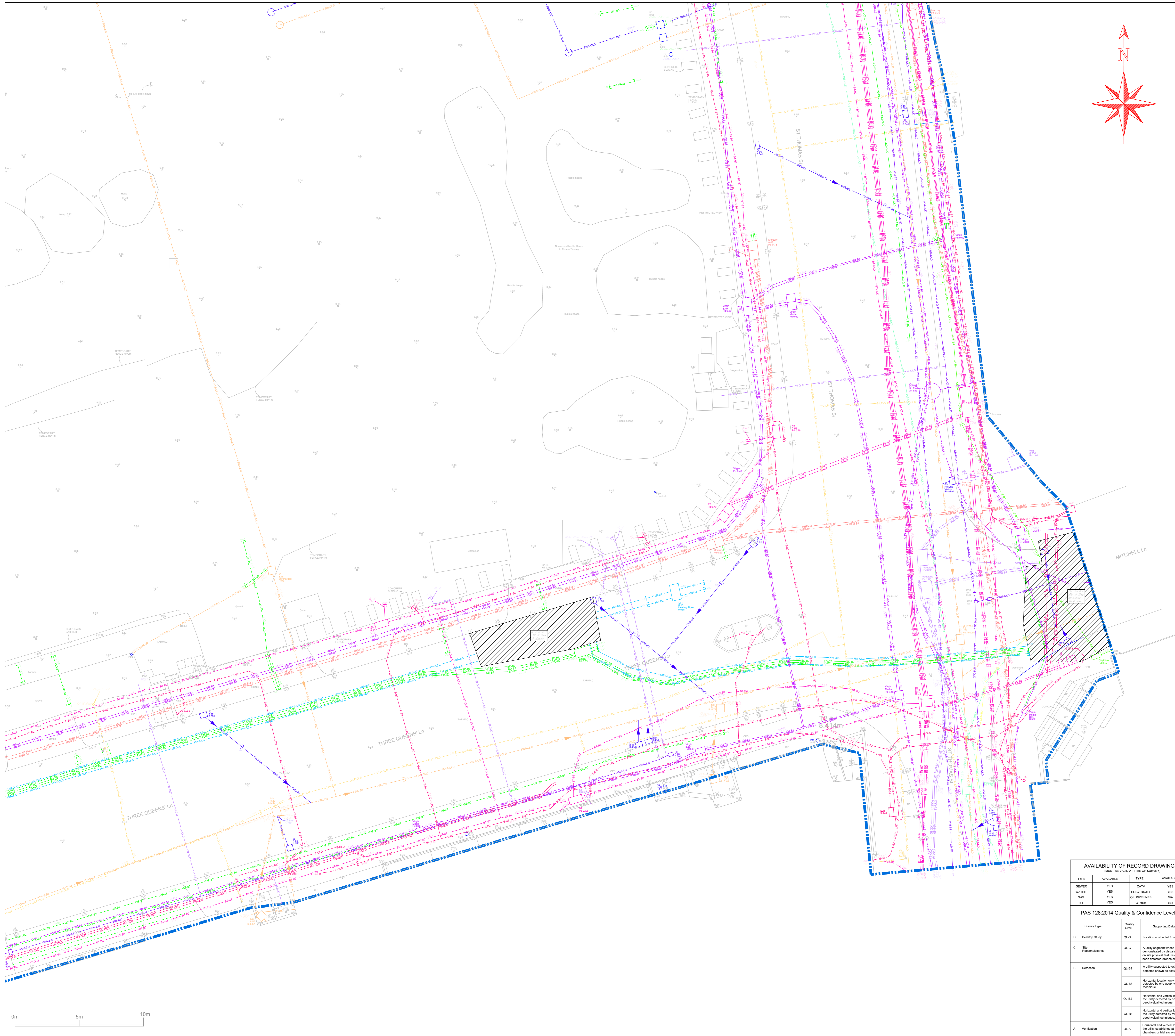


I 1.5.4 SITE INVESTIGATIONS



Survey Notes

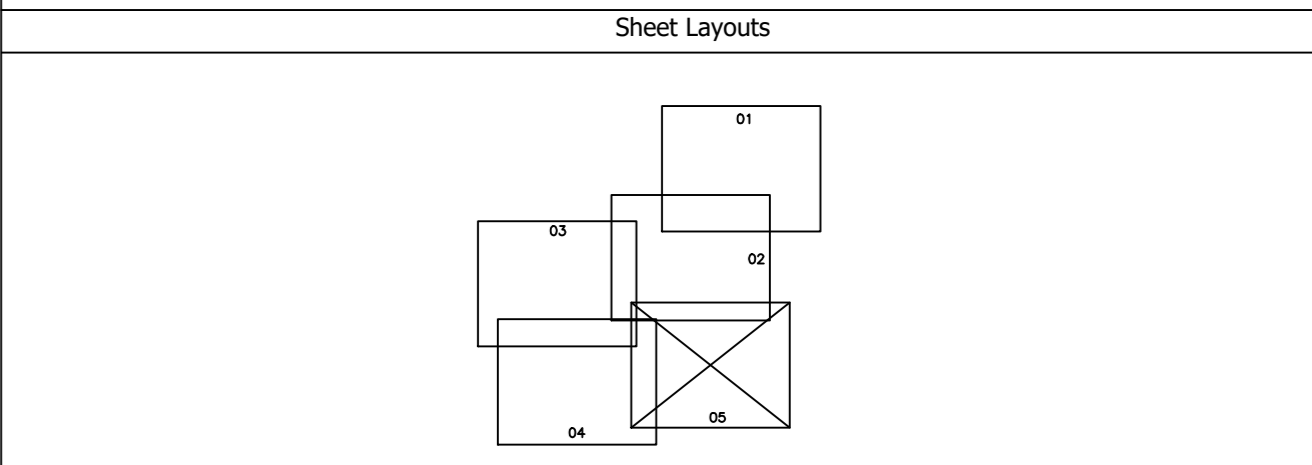
- 1: This Survey is related to the Original Site Grid.
- 2: All Levels are related to the Original Site Datum.
- 3: The information shown on this drawing is surveyed to the accuracy of the base scale shown.
- 4: Man entry to sewers has not been undertaken. Depths and pipe sizes are measured / estimated from the ground. This should be checked with Local Authority records or on site prior to the commencement of any works.
- 5: Boundaries shown are physical features and may not represent legally conveyed ownership.
- 6: Some services or features on the ground may be missing due to parked vehicles and other obstructions.
- 7: Where adjacent buildings have been surveyed remotely all walls may not be shown due to obstructions along lines of sight.
- 8: This plan should only be used for its original purpose. NJC Surveys LTD accepts no responsibility for this plan if it is supplied to any party other than the original client.
- 9: Only strategic services have been located on site and shown on this drawing. Small service connections have not been located and may not be shown on this drawing.

CAUTION LIVE SERVICES PRESENT - EXTREME CARE SHOULD BE TAKEN WHEN EXCAVATING

NJC Surveys Ltd, and their agents or partners, are not responsible for any situation, incident or loss resulting from actions or planning resulting from total reliance upon this drawing or accompanying information. The completeness of the underground network information cannot be wholly guaranteed and as such no guarantees or warranties are provided or implied. The location and/or identification of a service will not positively indicate whether it is live or dead. A service indicated from records that has not been located or identified on site does not necessarily imply that it does not exist or is dead, however, its presence should be anticipated. The results of Electro Magnetic and GPR detection techniques are not infallible and ground proofing for the actual position and depth of services should be established.

If this drawing and any associated drawings should be used in relation to works, we advise that the users of this information follow the principles detailed by the Health and Safety Executive guidance directive HSG 47, "Avoiding Danger from Underground Services". Further details of this directive are available at www.hse.gov.uk <<http://www.hse.gov.uk>>

- Manufacturers Stated Depth Positions
- Detected Using Electromagnetic Location Methods e.g. Any metallic pipe/cable. Accuracy ± 10% per meter of depth reading.
 - Detected Using Electromagnetic Location Methods eg. Using a Sonde to locate drainage pipework reading. Accuracy ± 10% per meter of depth reading.
 - Detected Using Ground Penetrating Radar e.g. A plastic pipe or service not be located by other means. Accuracy depends on ground conditions.



Utility Key

— HV (HIGH VOLTAGE CABLES)	— MV (MEDIUM VOLTAGE CABLES)	— LV (LOW VOLTAGE CABLES)	— E (ELECTRIC CABLES)	— G (GAS)	— W (WATER)	— S (SEWER)	— T (TELECOMMUNICATIONS)	— C (CABLE TV)	— F (FUEL LINE)	— V (VENT LINE)	— F (FOAM LINE)	— S (SOUNDING WIRE)	— R (REINFORCING)
— L (LAMPING CABLES)	— C (CABLE TV)	— W (WATER MAINS)	— S (SEWER MAINS)	— T (TELECOMMUNICATIONS)	— C (CABLE TV)	— F (FUEL LINE)	— V (VENT LINE)	— F (FOAM LINE)	— S (SOUNDING WIRE)	— R (REINFORCING)	— S (SOUNDING WIRE)	— R (REINFORCING)	— R (REINFORCING)
— G (GAS)	— W (WATER)	— S (SEWER)	— T (TELECOMMUNICATIONS)	— C (CABLE TV)	— F (FUEL LINE)	— V (VENT LINE)	— F (FOAM LINE)	— S (SOUNDING WIRE)	— R (REINFORCING)	— S (SOUNDING WIRE)	— R (REINFORCING)	— R (REINFORCING)	— R (REINFORCING)

ADDITIONAL SERVICE INFORMATION

- S (SOUNDING WIRE)
- R (REINFORCING)
- S (SOUNDING WIRE)
- R (REINFORCING)
- S (SOUNDING WIRE)
- R (REINFORCING)

Survey Key

— S (SOUNDING WIRE)	— R (REINFORCING)	— S (SOUNDING WIRE)	— R (REINFORCING)
— S (SOUNDING WIRE)	— R (REINFORCING)	— S (SOUNDING WIRE)	— R (REINFORCING)

Street Furniture Symbols & Abbreviations

— S (SOUNDING WIRE)	— R (REINFORCING)	— S (SOUNDING WIRE)	— R (REINFORCING)
---------------------	-------------------	---------------------	-------------------

Feature Lines

— S (SOUNDING WIRE)	— R (REINFORCING)	— S (SOUNDING WIRE)	— R (REINFORCING)
---------------------	-------------------	---------------------	-------------------

Client

winvic

Redcliff Quarter
Redcliff Street
Bristol

Availability of Record Drawings

TYPE	AVAILABLE	TYPE	AVAILABLE
SEWER	YES	CATV	YES
WATER	YES	ELECTRICITY	YES
GAS	YES	OK PIPELINES	N/A
		OTHER	YES

PAS:128:2014 Quality & Confidence Levels

Survey Type	Quality Level	Supporting Data
D Desktop Study	QL-D	Location abstracted from records.
C Site Reconnaissance	QL-C	A utility segment whose location is determined by visual reference to on site physical features but has not been detected (touch sound).
B Detection	QL-B	A utility suspected to exist but not detected shown as assumed route.
	QL-B3	Horizontal location only of the utility detected by one geophysical technique.
	QL-B2	Horizontal and vertical location of the utility detected by one geophysical technique.
	QL-B1	Horizontal and vertical location of the utility detected by multiple geophysical techniques.
A Verification	QL-A	Horizontal and vertical location of the utility established at inspection chambers or other excavations.

Client

winvic

Redcliff Quarter
Redcliff Street
Bristol

Drawing Title

PAS:128 Utility Survey

Drawing Type

Surveyed JP
Date 08/12/2021
Scale 1/100
Sheet size A0
Revision

